

## USING EXAMVIEW WITH CPS

To use Examview files is easy with CPS.

1. Under the “PREPARE” Tab , “lessons & assessments” subtab
2. click the “add file” located up in the middle top part of the window.
3. Then browse to find your file
4. Double click to add

To use it go to ENGAGE Tab, “lessons & assessments subtab”

1. Put a checkmark in the box located to the left of the lesson you want
2. Click “Engage” which will show up green up in the top middle of the window
3. You’ll get a CPS Set up box where you can change classes if needed
4. Click OK
5. From the toolbar, select “NEXT #1” to start with the first question
6. When students have answered click “END”
7. Close the chart and you’ll see the instant feedback.

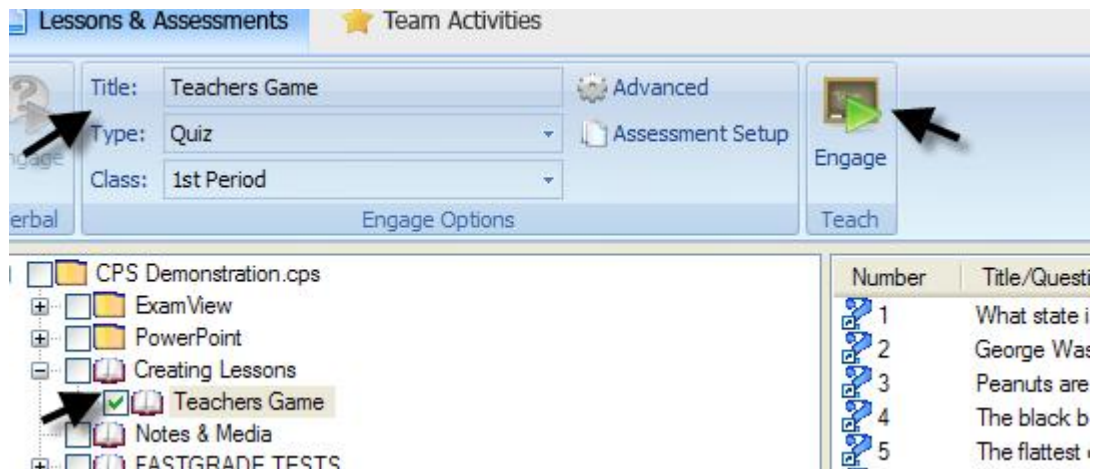
If you have examview files on a disk, copy them to your computer

If you don't, it will lose the file when you disconnect the CD

It's best if when you choose “save as” to copy them in a place where you can locate all examview files, for easy finding

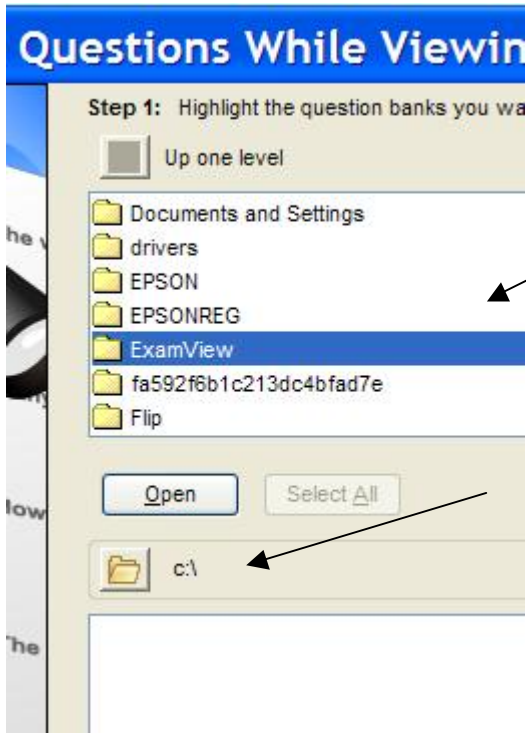
Then “add file” to associate them with CPS

Engage to deliver them

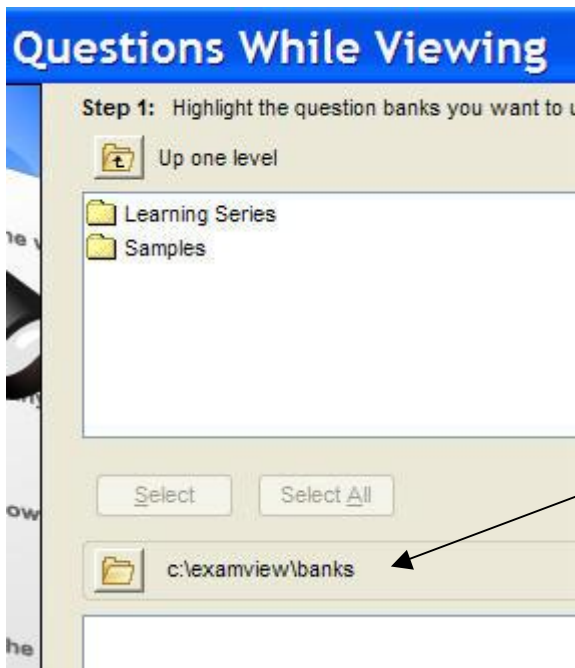


If you have a previous version of examview, your files will still work with Examview Pro. But your files might be in a different location on the computer.

You may want to move all your examview tests and lessons to the same folder as any new ones so they are altogether.



Notice how the file folder at says c:\ . That is because the examview file folder above is located in "C" Drive



Notice how when the examview file is open it now says c:\examview\banks Which means you are in C Drive, inside the examview file folder now and also inside the "banks" folder